

The Witness

Reverend Lynne D Trout

Volume 9, Issue 6

January 2009

ATTENTION KNITTERS AND CROCHETERS

We are in the planning to start a PRAYER SHAW MINISTRY here at First Presbyterian after the holidays and are seeking people, female or male, who would like to join us in getting the yarn flying.

For those of you who do not know, a PRAYER SHAW MINISTRY consists of a group who knit or crochets shawls and lap throws together with prayer guidance. Once items are completed, they are blessed and distributed to friends and family members and neighbors who need a hug from God. They could have just been married, had a baby, are ill or shut in, or lost a loved one.

If you know how to or would like to learn to knit or crochet and would like to be part of this ministry, please call either:

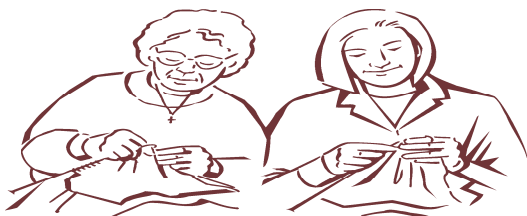
the Church Office, 856-461-2515
(churchoffc@aol.com)

Sue Mullen, 856-461-9518
(samull@comcast.net) or

Pastor Lynne, 856-255-5152
(pastorlynne@comcast.net)

so we have an idea of those interested joining.

More details will follow.



Prayer Shawl Ministry

PRAYER SHAWL UPDATE

Thank you for a very positive response in this new Mission!

Several of you have requested evening meetings, because you work, and some afternoon meetings, because you don't like to drive at night. In order to start out right, we are planning an information meeting on Thursday, January 8th, at 7pm in the Memorial Room. This will be a short meeting to answer any questions, introduce materials, give out very easy instructions and set a time and place for future meetings – sure we can do an afternoon meeting one week and evening meeting another week if needed.

If anyone needs a ride to this meeting, please let me know (856-461-9518) or samull@comcast.net and I will make arrangements.

See you on Thursday, January 8, 2009 at 7pm – bring a friend!



Inside this issue:

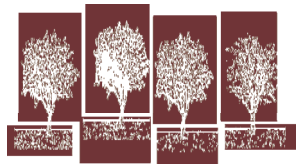
Mission News 2
IHN News

Pastor Lynne 3

Church Notes Insert

"The only limit to our realization of tomorrow will be our doubts of today"

—Franklin Roosevelt



ANNUAL MEETING

February 8, 2009

Annual Financial Reports are due February 5, 2009



9:00 am-Breakfast with Jesus

9:30 am-Church School

10:00 am-Choir Rehearsal

11:00 am-Worship Service

After worship (2nd Sun-

MISSION NEWS!

HEIFER INTERNATIONAL

What \$2 a Day Can Do!

Three billion people around the world live on less than \$2 a day!

In many countries people eat only one meal a day! What does \$2 a day in the United States buy each person? Can your family live on \$2 a day? Do you eat one meal a day?

In most countries a worker makes only \$100 a year but with an animal and animal training they can live healthier with more nutritional food for their family! They become empowered to combat hunger and poverty.

Would you donate \$2 a day to help a family in some remote corner of the world live a healthier life? Donations of one week (\$14), one month (\$60), even one day (\$2) would make a world of difference through an animal to a family.

Last year we donated one sheep, one pig, and one goat. The first offspring of each of those animals was given as a gift to another family to help empower another family. So, your gifts keep multiplying.

Can we buy one more animal this year than last? How about, rabbits, chicks, ducklings, goslings, guinea pigs, llamas, bees, or trees?

Mission Update

Thank you everyone for your generous support of our Angel tree. Your donations will help fill Christmas gifts for 40 men at America's Keswick. This will be the first year for some of the men celebrating the true meaning of Christmas.

We even are able to fulfill our obligations and pledges for the Mission Budget for 2008 to Presbytery with enough money to share with IHN, Home for Aged Women, Latin America Mission, Urban Promise and some Bibles for the youth of our church.

**A Mission-Minded-Church is a healthy church.
Grace and peace, Gerrie Diehm, Chairperson**

Dear Friends:

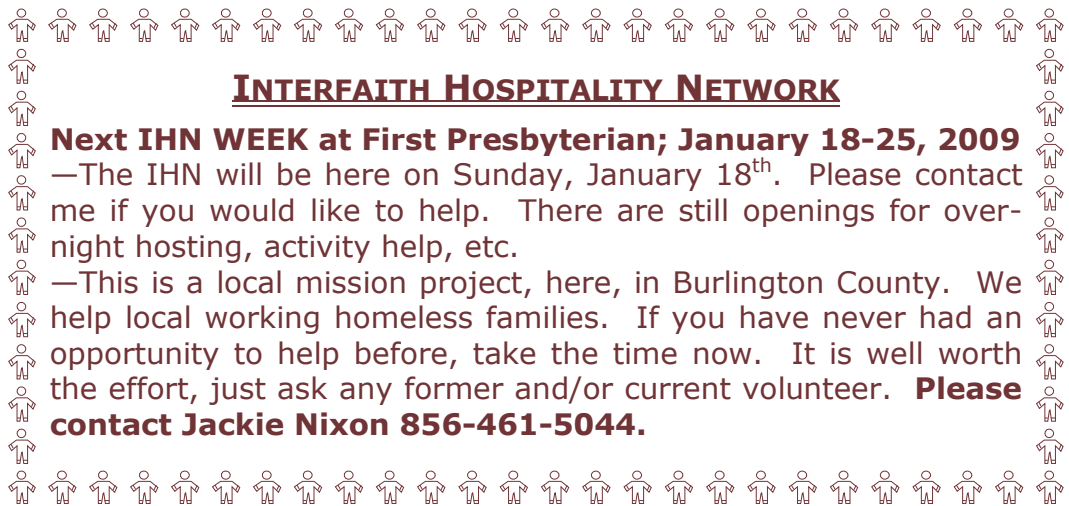
On behalf of the ministry of America's Keswick and the men of the Colony of Mercy, please accept our thanks and gratefulness for the items of clothing that were donated to the men for Christmas. We are so blessed and amazed at how God provides each year.

We praise the Lord for the way that First Presbyterian comes alongside of our ministry in reaching men with the glorious news of the gospel—the Lord Jesus Christ has come to set men and women free from the bondages of addiction, and through Him, can live victoriously.

May God bless you during this wonderful time of the year as we celebrated HIS birth. Merry Christmas.

For His glory, Bill Welte, President and CEO of America's Keswick

Please Donate your gently used Christian Books and Cookbooks for a Christian Book Fair coming in January.



INTERFAITH HOSPITALITY NETWORK

Next IHN WEEK at First Presbyterian; January 18-25, 2009
 —The IHN will be here on Sunday, January 18th. Please contact me if you would like to help. There are still openings for overnight hosting, activity help, etc.
 —This is a local mission project, here, in Burlington County. We help local working homeless families. If you have never had an opportunity to help before, take the time now. It is well worth the effort, just ask any former and/or current volunteer. **Please contact Jackie Nixon 856-461-5044.**

PASTOR LYNNE

Why is per capita important?

Per capita brings Presbyterians together — literally!

Presbyterians are connected in many ways, including our [church government](#). We believe we discern best what God is calling us to do when we gather as governing bodies, “seek[ing] together to find and represent the will of Christ” (*Book of Order* G-4.0301). Per capita dollars pay for the costs of holding a [General Assembly](#) — including paying for the travel, room and board of commissioners and advisory delegates, several of whom would not be able to afford these expenses on their own.

Per capita makes it possible for Presbyterians to govern ourselves the way we do.

Presbyterians have a form of government built upon shared power and mutual accountability as we seek together to find and represent the will of Christ. By providing the primary means through which commissioners and advisory delegates can gather to do their work, per capita dollars help to undergird our governance system.

Our Constitution provides a moral and theological compass that builds community and calls us to Christian faithfulness in gratitude to God.

Per capita makes possible our effort for visible unity of the church of Jesus Christ.

The PC(USA), as with other faith traditions and denominations, is but a small part of the one church of Jesus Christ. We affirm that God’s call is for the church to be one.

Per capita makes it possible for us to maintain our historical awareness.

Our historical heritage helps us make informed decisions for the future. The Presbyterian Historical Society is our national archives and historical research center. It collects, preserves and shares the history of the American Presbyterian and Reformed tradition.

From PC(USA) website on Per Capita.—Importance of Per Capita Per Capita—The Presbyterian Covenant Community Fund

The information above on paying our Presbytery per capita is important. Payment of our Presbytery per capita, together with the new ministries coming in January (Prayer Shawl Ministry, Confirmation Class, New Member Class, and a weekly Bible study) as well as ongoing activities and regular church worship will all enable us to further live out our mission statement: Inspired by God and Christ Centered, we worship, we study, we serve, and we invite all to share our faith as we follow with enthusiasm our Leader, Jesus Christ. I hope we will each pray about and participate in the ministries being offered in our church, whether they are new or ongoing. We can best serve by our participation. If you need transportation, please contact me so I can arrange for assistance. —Pastor Lynne

CONFIRMATION CLASS

Pastor Lynne & Rick Trout will be teaching the Confirmation Class starting January 11, 12:15 to 1:15 pm meeting every other Sunday.

We are asking class member parents to sign up for bringing food for after each class.

Dear Friends,

I would like to thank everyone for the monetary gifts for Installation and Christmas. I also thank you for welcoming Rick and me so warmly in the church family. There are not adequate words to express our heartfelt appreciation. I look forward to working with you and growing with you as we live our Mission Statement and love and serve our Lord.

Thank you for everything.

In God’s love,
Pastor Lynne

Reverend Lynne D Trout

First Presbyterian Church of Delanco
505 Union Avenue
P. O. Box 5085
Delanco, NJ 08075

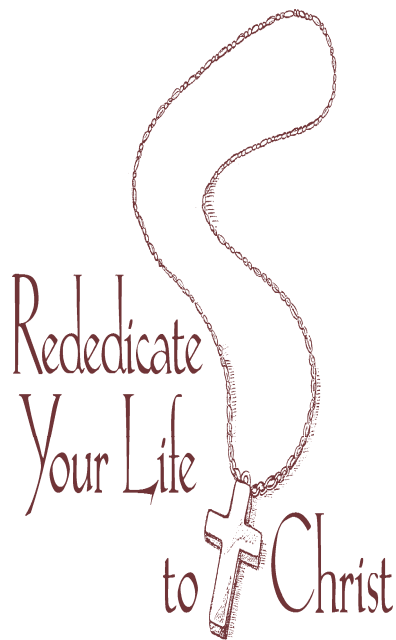
Non-Profit
U.S. Postage
Paid
RIVERSIDE, NJ
Permit #113

ADDRESS SERVICE REQUESTED

(Use Post Office Box for mailing)
(856) 461-2515
(856) 461-8615 FAX
Church Office Hours: 8:30 a.m.—12:30 a.m.



THE WITNESS



REMEDY FOR A FLAT SPIRIT

Almost everyone has an occasional down day. You know the dreaded “flat” or “blah” feeling. Sometimes you don’t even feel like praying. Is there any hope for this condition?

In the 12th century, a Carthusian monk named Guigo felt drained and depressed. But as he rested, the following prayer came to his mind:

My soul is so dry that by itself it cannot pray;
Yet you can squeeze from it the juice of a thousand prayers.

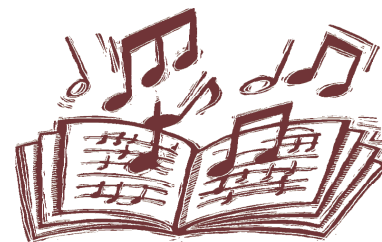
My soul is so parched that by itself it cannot love;
Yet you can draw from it boundless love for you and for my neighbor.

My soul is so cold that by itself it has no joy;
Yet you can light the fire of heavenly joy within me.
My soul is so feeble that by itself it has no faith;
Yet by your power my faith grows to a great height.
Thank you for prayer, for love, for joy, for faith;
Let me always be prayerful, loving, joyful, faithful.

CHURCH NOTES



Newsletter Production helping hands
 We will meet during 3rd or 4th week so that the Witness is sent out before end of the month. Anyone who would like to help gather articles for newsletter please contact :Jeanne Mehling



Choir Rehearsal

Choir Rehearsals in January
 2nd & 4th Wednesday of each month
 7:00 p.m.
 and each Sunday at 10:00 am
 Contact Nancy Gager

Per Capita

Is assessed by the Presbytery of West Jersey to fund the ecclesiastical expenses for 2009 by mutually sharing the costs of coming to together to discern the Spirit's leading for the future.

THANK YOU!

-\$3209 is needed for 2009
-\$39.00 per capita from 83 members in 2009

PLEASE HELP BY DONATING ABOVE YOUR CURRENT FUND DONATIONS TO THANKSGIVING, TO CHRISTMAS & TO PER CAPITA!

Monthly Meetings During September-June

Worship & Music Committee Meeting
 on 1st Monday at 10:00 a.m.

Deacons Meeting
 on 1st Tuesday at 7:00 p.m.

Christian Education Meeting on 1st Sunday after worship

⇒ **PLEASE NOTE COMMITTEE REPORTS** Should be copied & Distributed by Sunday before each **Session Meeting** on 2nd Monday at 7:00 p.m.

Buildings & Grounds Committee Meeting
 3rd Wednesday at 7:00 p.m.

Mission Committee Meeting
 (See Gerrie Diehm)

Chancel Flowers Dedications

Two flower bouquets are used at Sunday worship services.

Each flower bouquet costs \$8.00. Please make checks to Deacon's Flower Fund. When dedications are not made then the flowers are paid out of donations for other purposes. You may take them home or donate to shut-ins.

Flower dedications are available all year long:

1. sign up for a date in the Annex
2. contacting Vera Taylor (856) 461-6074
3. write to the church with your dedication and check for one or two bouquets.

Flowers Needed for Nov/Dec/Jan/Feb



Please Don't Forget your Church

UPDATES OF SOLDIERS IN MILITARY

*Owen Brennan — McGuire AFB, NJ
 *Chief MSgt. Chris McCullough — Texas—congratulations!
 Jason Carroll—now in IRAQ
 Dan Morales—IRAQ
 Donald Seymour—deployed to Qatar

DELANCO SENIOR CITIZENS

MEETS AT NOON EVERY SECOND TUESDAY OF EACH MONTH FROM SEPTEMBER 2008 UNTIL MAY 2009.